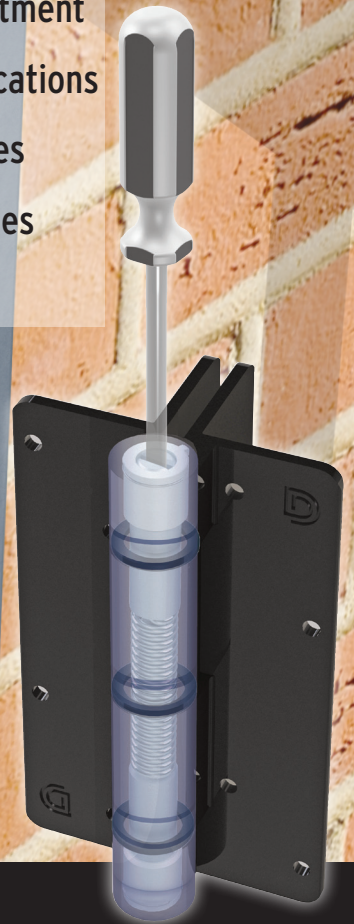


The world's best aluminium wall and post mounted gate hinges

NEW

D[®] KWIKFit[®] ALUMINIUM

- Powdercoated aluminium hinges
- D&D-patented tension adjustment
- 3 models for different applications
- Wall and Post Mounting styles
- Tested to over 300,000 cycles
- 2 Year Warranty



Adjust tension from both ends

6 tension settings

One-handed tension adjustment

Models with side-fixing legs

Internal stainless steel spring

Low-friction polymer pivot washers

Tension adjustment always facing up. Suits left or right swinging.

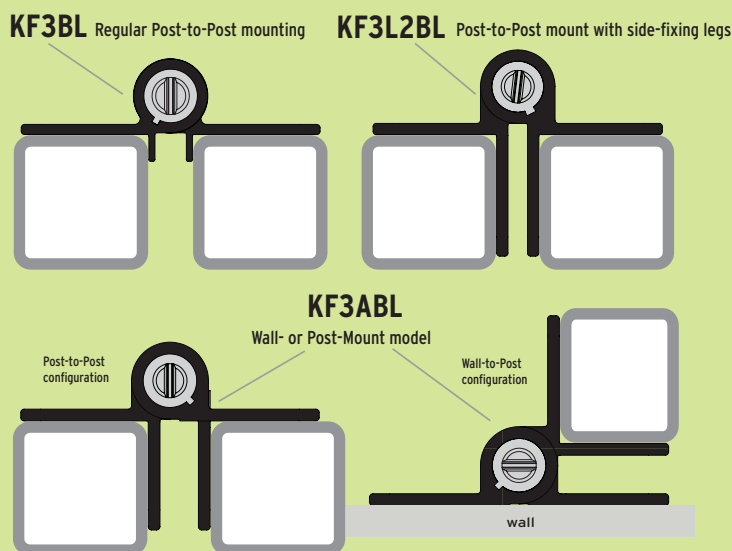
Finer self-closing adjustment to suit a range of metal gates.

Adjustable using standard screwdriver (6mm slot-head ideal).

Quick alignment and added fixing strength.

Highly corrosion resistant. Closes gates up to 20kg.

Long life & low maintenance. Reliable, low-friction pivot action.

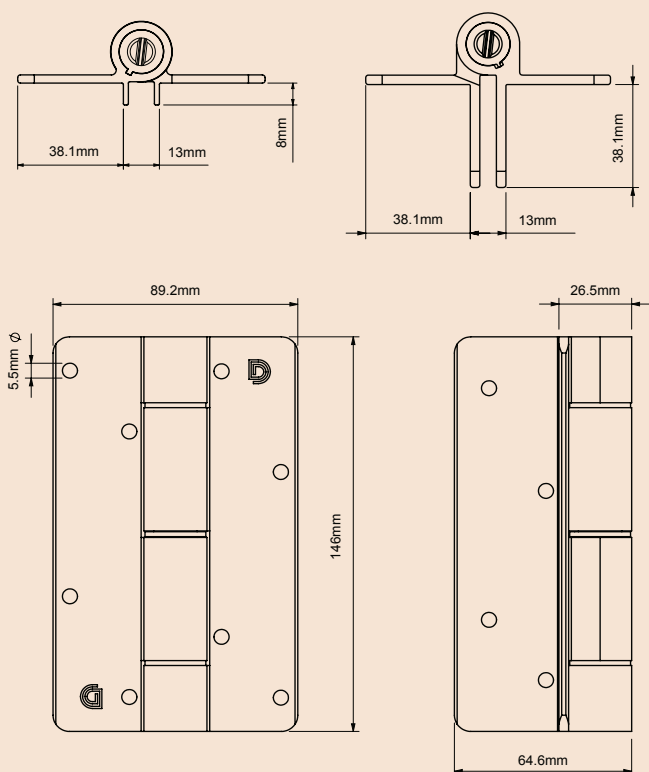


Three mounting styles



Dimensions

KF3BL & KF3L2BL



KF3ABL (different mounting styles)

